

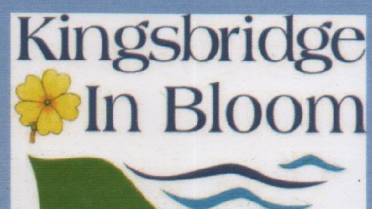
Kingsbridge in Bloom 2012



Royal
Horticultural
Society



South West in Bloom



KINGSBRIDGE IN BLOOM - 2012 PORTFOLIO

Contents

Welcome to 'Kingsbridge in Bloom'	Page 2
Introduction to the Portfolio & other Evidence	Page 2
Regeneration of the Town's Parks	Page 3
Bee-friendly Kingsbridge	Page 5
Walls, Gardens & Allotments	Page 6
Horticultural Achievement	Page 8
Environmental Responsibility	Page 11
Community Participation	Page 13
Appendix 1: Community Champions	Page 15
Appendix 2: Our Organisation and Contacts	Page 16
Appendix 3: Planting Plan for Recreation Ground Beds	Page 17
Appendix 4: Funding & Sponsorship 2011-12	Page 18

Welcome to 'Kingsbridge in Bloom'

Welcome to Kingsbridge. This is our fifth year as an entrant in South West in Bloom, and we are keen to retain our Gold standard and the SW Tourism trophy we won for the first time last year. As a small market town, our success has been built upon strong community involvement and a spirit of continuous improvement. Everyone in the town recognises the difference that Kingsbridge in Bloom (KIB) has made since we first entered the competition. It has been an amazing vehicle for brightening up the town and improving its public spaces. We feel it has helped support the success of its shopping centre during a difficult period, and has developed the town's potential as a tourist destination.



Introduction to the Portfolio & Other Evidence

Our portfolio continues with an introduction to some new developments within our work programme this year. We highlight the extensive work that has been done to regenerate the town's main public parks, and the judges will be able to visit the two parks on their judging route. It also explains why we've been busy planting wild flower drifts and bee-friendly plants, and introducing colonies of bees into the Community Garden.



Our programme of work this year has incorporated special features for both the Jubilee and Olympics. These, and the work that goes on all year round, are best demonstrated in our photo-based display rather than in the portfolio. A number of the areas we maintain, as well as the multitude of hanging baskets on shop fronts and in public places, will be demonstrated on the judging route.

As any judges who have visited us before will know, our success has been built upon a core of hard-working volunteers, supported by funds we have raised or had donated locally. We do not rely on external funding for our primary activities. The Kingsbridge in Bloom Committee continues to liaise closely with Kingsbridge Town Council and South Hams District Council as well as many community groups in town (also evidenced in our display).

Increasingly we have sought to involve individuals and locality groups in taking on responsibility for neighbourhood schemes. This helps take pressure off the main group of volunteers, and leads to greater ownership by the community. These schemes will be visited on the judging route, and three of the schemes are entered separately for neighbourhood awards.

Finally, after we offer evidence against the three main judging criteria, we introduce the first three of our community champions. These are some of the people from the town who have supported Kingsbridge in Bloom in their individual ways, for which we are extremely grateful.

Regeneration of the Town's Parks

Over the last year a lot of work has gone into redeveloping the two main public parks within the town. Kingsbridge in Bloom has played a significant role in these projects, working alongside the Town Council, SHDC and the Kingsbridge Playspaces Group.

Duncombe Park

Prior to its regeneration, Duncombe Park had become a rather tired-looking area of grass with a set of fixed football posts annoyingly near to neighbouring houses. A children's play area in the corner had already been improved, including a colourful mural on the wall painted by local children and KIB volunteers.



A community body called Kingsbridge Playspaces Group was formed, and successfully raised funding from Groundwork, the South Devon Local Action Group and through local fundraising events. The group worked in conjunction with the Town Council, SHDC, Kingsbridge in Bloom and other community groups to establish a plan – with emphasis on re-siting a flexible football pitch away from surrounding houses, introducing some more adventurous play equipment for older children, and surrounding the park with a variety of trees and shrubs. The work was completed this year with the introduction of two large tiered planters at the top of the steps leading to the park from Church Street.

The Recreation Ground

Improvements to the town's Recreation Ground (or Memorial Park) have been the subject of lengthy discussions & analysis to get to the root of the regular flooding problems experienced in recent years. Work was completed in 2011 to repair the park's drainage mechanism and test the soil for salinity levels, and extensive fin drainage put in place.

While this was proceeding, the Playspaces Group developed the rear of the park to include a range of modern play equipment. The result has been a great success, with many more families using the park than in recent years.



A Parks & Green Spaces Committee was formed to oversee the regeneration of the rest of the Recreation ground on behalf of the Town Council - in which Kingsbridge in Bloom has played a significant role - not least in winning funding with its entry in the NatWest CommunityForce competition.



Preparing the Sensory

The pond has been transformed from a concrete eyesore into a wild-life pond, with the central fountain replaced by a platform on which a series of sculptural installations will be located. The first of these is by a local artist, Carl Hahn, to be followed by the winners of an annual competition to be held at the Community College.

The area has been landscaped to reinstate a putting green, and to introduce raised sensory beds, a wildlife pond, a pétanque court, cafe, picnic areas and new seating & pathways. Just the planting out of the sensory beds took the KIB team a total of 5 man-days to complete.



The Pond after planting



The inclusion of Sensory Beds in the design for the re-developed Recreation Ground was proposed by Kingsbridge in Bloom, who secured the funding from the NatWest competition and from local donations. The choice of plants for the two beds was based upon the 5 senses - with one featuring colourful plants such as the Dahlia 'Bishop of Llandaff' and Rudbeckia fulgida for sight, and some easily recognisable plants chosen for their taste - such as chives and chard.



The second bed has ornamental grasses for sound, plants with a range of textures (e.g. Eryngium agavifolium and Lambs Ears) for touch, amid others selected for their smell (e.g. Lavenders and Thymes). The planting plans for the beds are included as Appendix 3 in this portfolio.



The Recreation Ground pond 2012

Bee-friendly Kingsbridge

It took Sarah Raven and her television series 'Bees, Butterflies and Blooms' to raise national awareness of the benefits of planting up civic locations in a more naturalistic, bee-friendly way. However, we at Kingsbridge in Bloom decided to go a step further and supplement the planting of insect friendly beds and wildflower drifts with the introduction of our own bees into the community.

As a first step we approached the trustees of Kingsbridge Community Garden, and they agreed to act as custodians of the first bee colony. The bees arrived in May, and volunteers have been trained to look after them, with the help of an experienced mentor. When a swarm appeared nearby our



Arrival of the first nucleus of



Setting up the hive in the Community Garden

beekeepers went out and successfully collected it – so the Community Garden now has two hives. The bees are busy pollinating the plants in the Community Garden, and collecting nectar and pollen from the wider community. Next year we plan to find suitable private gardens to house a few more hives, and in the longer term investigate the possibility of setting up a community bee group.

It's no good having bees if there are no suitable flowers to interest them. So, this year has seen the planting of many more insect-friendly plants in the town. The Community Garden have planted 200 lavender plants, and when South Hams District Council offered KIB the chance to choose a planting scheme for their quayside beds, we selected bee-friendly plants, such as sedum and aquilegia.



Apis Mellifera at work



Sowing wild-flower seeds at Britton's Field

Following the success of the Pictorial Meadows project at the Primary School, KIB has also sown wild flower meadow seeds on a number of sites around town – including St Edmunds churchyard and Britton's Field picnic area. These are trial sites which will be extended if they prove successful. Children from the Primary School and the town's Brownie pack had great fun sowing the seeds for us.

Walls, Gardens and Allotments

While the main focus on the judging route this year will be the regeneration of the town's parks & play spaces, we would like to give an indication of some of the other floral features that Kingsbridge has to offer. Our display at St. Edmunds church will include a feature on 'Hidden Kingsbridge', and here in the portfolio we would like to highlight some of the walls, gardens and allotments that make up the delightful fabric of the town.

Walls As many of the walls bounding our houses and gardens are made up of local slate and granite from Dartmoor, not brick or concrete, they provide a perfect niche for a wide range of colourful plants. As this wall on Fosse Road shows, these include Mexican Daisies, Osteospermum and Silverbush (Convolvulus cneorum).



This corner provides a sunny site for a blanket of Campanula – a common site on walls throughout the town in May and June – particularly on Church Street.



Here, a wall with metal railings on Duncombe Street is smothered with a mass of Campanula and Mexican Daisies.



Elsewhere, Red, Pink and White varieties of Valerian and California Poppies squeeze their way between the stones, and make a colourful show on top of our garden walls and alongside our paths and backways.



Gardens

Behind the town's walls and fences lie a fascinating mixture of gardens – large and small, some immaculately tended, others more natural and wildlife friendly.



The extent to which people like to investigate these hidden treasures is shown by the popularity of the biennial Open Gardens scheme, run by Kingsbridge Community Garden. This year, almost 200 people roamed the town

in June to look at the collection of courtyard, cottage and townhouse gardens.

The town's gardens, window displays and hanging baskets can also be entered into the KIB Local Gardens Competition, held each year after the 'In Bloom' judging has finished.

Here are some winning entries:



Allotments

Like many other towns and villages, Kingsbridge has insufficient allotments to cater for the current interest in 'growing your own'. Some of its existing allotments have been under threat from plans for building development, but with lobbying from Kingsbridge Agenda 21 and local residents their future has hopefully been secured. The allotments at Hurrell Road, occupy part of the old Primrose Line railway, and are well tended, and very productive.



Other residents unable to secure an official allotment, and not wanting to see good ground go untended, have shared the cultivation of local gardens. This example on Stentiford Hill is shared by four families.

Horticultural Achievement

A1 Impact

- o By common consent, Kingsbridge in Bloom has brought about a tremendous change to Kingsbridge over the last 5 years, helping to restore pride in the town – particularly through the impact of the hanging baskets on Fore Street, and the development of sustainable beds on the Town Square.
- o This year there has been a unifying colour scheme of red, white & blue, plus planting in the 5 Olympic colours on Town Square to signify the Olympic Lanes.
- o Planting of new plants has been mixed and appropriate to each area – e.g. bee-friendly wild flower seeds sown within areas of grass such as Britton's Field, bedding used for Jubilee and Olympic features, sensory perennials planted in the Recreation Ground, and trees & shrubs established around the perimeter of Duncombe Park.
- o The sustainable beds in Town Square, containing plants such as rudbeckia, allium and hardy geraniums, continue to require little attention – just some infilling where plants failed to survive the harsh winter.
- o The working parties of KIB volunteers continually maintain the beds and features within the town throughout the year.
- o Special features have included the Union Flag planted in the Recreation Ground, the Olympic lanes, floral torch design and additional heron sculptures on Town Square, as well as areas of historic interest such as the Lime Kiln and Railway Arch.
- o The new Sensory Beds are a key focal point in the newly regenerated Recreation Ground, and along with the wildlife pond & sculpture island demonstrate an innovative approach to the development of the park. Also, our planting of wildflower meadows and bee-friendly plants adds a new dimension to our planting themes.



A2 Horticultural Practice

- o Working parties undertake targeted trimming, weeding and improvement work throughout the year. Baskets were fed when established, and will receive a top-up feed mid season. All baskets are water conservation type with a water reservoir, and volunteers provide top-up water with a bowser on a rota basis. Pruning was undertaken on the Church St garden trees and shrubs this year.
- o Care has been taken to introduce quality plants, of the right size – with room to establish themselves and fill out. Good examples include the two sensory beds (see plan in Appendix 1 and the beds on the judging route).



- o Considerable attention has been paid to sustainability this year, with the introduction of bee-friendly planting and wild-flower areas, and the introduction of bee hives within the Community Garden. Limited use is made of bedding plants – mainly for design features. We have also begun to investigate the possibilities for community composting.
- o The sustainable beds in the town centre require no new planting. In many other beds perennial plants are retained, and supplemented with new plants. However, the hanging baskets are newly planted for the summer season – but in the winter contained displays of Christmas greenery and ribbons, rather than winter plants which have proved to be difficult to see and wasteful of resources.
- o The new planting and other developments in the two town parks is the culmination of a long-term plan which has now come to fruition with the solving of technical issues and the securing of funding support. There are future plans to regenerate some neglected parts of town.

A3 Residential & Community Gardening

- o Some residential gardens can be seen on route, including front gardens and container gardens displayed on raised pavements (see also the photo display on 'Hidden Kingsbridge'). Kingsbridge also has an annual 'Local Gardens Competition' – also highlighted at the exhibition, and by the section in this portfolio on 'Walls, Gardens & Allotments' (pages 7 & 8)
- o Kingsbridge Community Garden is the centre-piece of the town's communal garden initiatives – this 'jewel in the crown' being maintained entirely by its team of volunteers and trustees.
- o Other communal spaces supported and developed by KIB include a) Britton's Field, a picnic area overlooking the estuary – which this year has been planted with a wild-flower drift, b) the Lime Kiln, a small heritage site off the quayside, which contains pots of bee-friendly plants and provides a tranquil space off the bustle of the car park, and c) the garden on Church St which marks the site of the old cattle market, and which has been developed as a community play area and picnic spot by local residents.
- o Kingsbridge in Bloom has helped to maintain the gardens around the Kiln House residential home, and this year has helped create a small memorial garden at the entrance to the South Hams Hospital.
- o The entrances to Quay House (the Town Council building) and the adjacent Library, Age Concern buildings and bandstand are all adorned with baskets and planters (containing a mix of petunias, bacopa, begonias & fuschias), making the area a riot of colour in mid-summer.
- o The town's schools and churches play an important part in the floral effort – with the Primary School maintaining its Pictorial Meadow of wild flowers, and St Edmunds church this year planting an olive grove and sowing a wild-flower drift in the churchyard.



- o Raised beds along the main car park by the quayside are planted with a mixture of perennial plants, bulbs and occasional bedding.
- o A number of local community groups have developed and maintained their own localities, including the Church St garden, the planters on the top of Fore St (which have now been extended to five), and a seating area on Duncombe St – now restored after building work next door.



Quayside car park

A4 Business Areas & Premises

- o Local businesses throughout the town enhance their shop fronts with baskets and tubs, with KIB encouraging them and offering a scheme to support a consistent planting approach – this year in the patriotic colours of red, white and blue.
- o The town's pubs compete with each other for a prize in the Local Gardens competition, producing some very colourful displays.
- o Several local businesses on Fore St allow KIB to use their windows to provide a series of displays throughout the year on the year-round effort, goals and achievements.
- o KIB is highly dependent on local businesses and individuals sponsoring its baskets, beds and planters. Local organisations such as the Women's Institute and Estuary Boat Club sponsor features such as the planted boats, and similarly the local Ramblers sponsored the new interpretation sign at the Railway Bridge.
- o New sponsorship signs have been produced to give credit to the many organisations that have helped fund the 'In Bloom' features and activities.



Pavement planter on Fore Street

A5 Green Spaces

- o Considerable redevelopment has taken place this year within the town's two main public parks, as part of a long-term regeneration plan (see pages 3-4).
- o In Duncombe Park, facilities now include pieces of large play equipment, surrounded by a ring of native and ornamental trees & shrubs. The Recreation Ground now has play equipment, putting greens and petanque courts, a wildlife pond, two raised sensory beds, picnic areas and a small cafe.
- o 3000 additional bulbs were planted this year in public spaces, plus hundreds of lavender plants and a number of trees. Two wild-flower drifts have been planted in green spaces, with plans to extend these next year. Many more primroses have been added to the Primrose Bank at the Railway Bridge.



flower drift at St Edmunds

Environmental Responsibility

B1 Conservation & Biodiversity

- o The Kingsbridge Estuary Tree Trail, established with the support of KIB, encourages families and young people to explore the wide variety of trees growing alongside the estuary.
- o Britton's Field is a meadow overlooking the estuary which has been carefully enhanced by KIB as a picnic area with newly laid hedges and a drift of wild flowers.
- o The Community Garden has retained much of the lower garden as a wild-life friendly area, with log piles among existing woodland plants and now two bee hives.
- o The Railway Bridge site is being conserved in a planting style reminiscent of the time of the railway line, with a primrose bank and the station-masters vegetable & flower beds. The site has recently been enhanced with an interpretation board to inform people of its historical context.
- o Pupils at Kingsbridge Community College have undertaken a study of the impact of chemicals on the wildlife of the estuary, and with assistance from KIB have established the College as a Phosphate Free Zone (to be displayed in the exhibition).
- o Members of the KIB Committee are members of the Estuary Forum, and liaise with the South Hams Society and other bodies regarding their conservation activities.



Enhancing Britton's Field

B2 Resource Management

- o The Community Garden acts as an exemplar of good practice regarding rainwater use and storage, sustainable planting, effective composting (including a compost toilet), the value of wormeries and now beekeeping.
- o KIB uses hanging baskets with water reservoirs, necessitating less watering from the bowser. The principal beds around the Town Square have been planted sustainably, with a mixture of drought tolerant perennials and grasses – requiring no watering once established.
- o The KIB Committee have begun to investigate options within town for community composting. Although the town already has a brown bin waste disposal service (for all garden waste), we have discussed possible sites for community composting with the relevant Local Authority departments and the Community Composting Network, and have also been in discussion with KCC over use of their land. These investigations are on-going.
- o Some of our container compost is recycled, and all our exhausted plant material is recycled through the SHDC's brown bin scheme.



Community Garden bee hives

B3 Local heritage

- o KIB has initiated a resurgence of interest in managing & developing a number of local heritage sites within town. These include the Railway Bridge, Church St Market Garden, and the Lime Kiln – all of which have been significantly enhanced through restoration and planting schemes. Improvements continue to be made to these – e.g. tree pruning and an extension to the planting in the Church St garden.
- o Features relating to local heritage and environmental issues have been highlighted through the text and photographs on the interpretation boards that KIB has designed and installed at key sites. New boards for this year have been placed at the Railway Bridge and the Sensory Garden in the Recreation Ground.

B4 Local Environmental Quality

- o The Town Council in liaison with KIB have introduced a 'Keep Kingsbridge Clean' message through a poster campaign.
- o The local Cub Scouts helped KIB clean up the public road and private pathways for the Trevanna Road Residents Association, removing 19 Kg of rubbish.
- o A piece of waste ground at the top of Riverview Place has been planted up by Rope Walk clients, with financial support from KIB.
- o Periodic litter picks are arranged by KIB, with assistance from local young people's groups.
- o Members of the Kingsbridge community take part in regular beach clean operations organised by the South Hams Society.
- o The three-tier planters introduced at the top of Duncombe Park steps is the first step in an operation planned to improve that whole area – with plans for the inclusion of further planters, trellising etc.
- o KIB takes every opportunity to place displays in the windows of any empty shop premises until they become re-let or sold, to help keep the town's image lively.



B5 Pride of Place

- o With the support of KIB, the Town Council has adopted a consistent style for any new benches in public places. New benches that are being installed in the Recreation Ground are being offered to the public for sponsorship.
- o Kingsbridge in Bloom has designed new gateway signs for the town that have been erected on each major route into Kingsbridge.
- o The number of interpretation boards placed around town by KIB now numbers seven – all to the same consistent design.
- o As part of the development of the Recreation Ground, a contractor has sponsored an annual competition for the Community College students to design an installation to adorn the island in the pond. Meanwhile, KIB have invited local artist Carl Hahn to provide one of his wooden sculptures.



Community Participation

C1 Development & Continuity

- o The Kingsbridge in Bloom Committee has gained several new members this year, and is actively discussing how to ensure continuity of the project over the coming years.
- o KIB benefits from its central body of volunteer support, and does not rely on grant aid or Local Authority financing of its core activities.
- o Locality groups and other organisations such as the Churches and Societies are increasingly being encouraged to take responsibility for key features or areas in the town, taking some of the workload away from KIB – e.g. Church St garden and upper Fore St.
- o The major development projects associated with improvements to the Town Square were completed last year, allowing KIB to focus attention this year on the regeneration of the Town's parks.
- o Our environmental initiatives were also seen as an area for improvement at the start of this year – leading to the planting of bee-friendly plants, the introduction of bees and investigations into possibilities for community composting. These are all work in progress, and will be reviewed and extended over the coming year.



C2 Communication & Education

- o Kingsbridge in Bloom Committee members all have specific roles, and our Press & Publicity Officer has maintained a constant stream of articles over the year about Kingsbridge in Bloom and the Community Garden in the local newspaper (the Gazette) and in magazines such as The Post and Devon Life + regular displays in shop windows.
- o KIB has given a series of talks to gardening groups, the Women's Institute, Tangent & other bodies. We also arranged a talk on Sustainable Gardening from a local expert.
- o We have regular meetings with our liaison person at Kingsbridge Community College, and share lunch occasionally with their Eco-Group members. In our planting and tidying campaigns we involve local children through the Cubs, Guides and local Primary School.
- o KIB has held stalls at events such as the arrival of the Olympic Torch and Kingsbridge Show to encourage people to garden sustainably, and particularly to encourage young people to get 'hands on' with planting seeds and topping up the wormery.
- o KIB is now proudly flying its 'In Bloom' Gold flag on the Town Square.
- o Kingsbridge Agenda 21 continues to campaign for a 'Plastic bag free Kingsbridge', and is working with local MP Sarah Wollaston to bring about a change in government policy.

C3 Community Participation

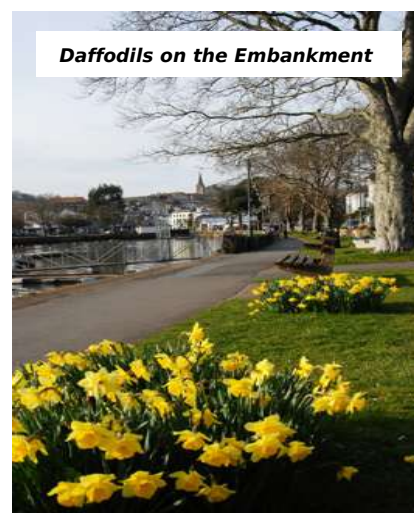
- o Kingsbridge is not an ethnically diverse community, and has a greater proportion of older people than most small towns. It is not surprising therefore that those involved in KIB activities tend to reflect these facts. However, we are constantly encouraging all elements of the local community to join us – e.g. we

held a Ceilidh in the Kings Arms in the centre of town, we advertise in the gazette, shop windows and parish magazines.

- o We involve the Rope Walk Project clients (adults with learning difficulties) in our activities, and the Community Garden also supports the participation of young people seeking work experience and adults with special needs in their work.

C4 Year-Round Involvement

- o Principal evidence for our year-round activity is included in the annual scrapbook and photo-display, both of which will be shown to the judges at the presentation at St Edmunds Church.
- o KIB has been involved in a more than year-long process of regeneration of the town's parks through its role in the Parks & Green Spaces Committee. It has been a year of research, discussion, planning, project managing, preparing ground & planting – all culminating this summer with the re-opening of the parks.
- o After the Fore St hanging baskets were removed last autumn, they were replaced with winter displays of decorated evergreen leaves. These have in turn been replaced by this year's summer displays.
- o KIB volunteers take part in regular working parties throughout the year – weeding & forking over beds, applying soil conditioner, replanting, fetching & carrying bags of compost, recycling waste, watering in new plants, watering with the bowser, looking after specific sites such as the Railway Bridge, planting up new features such as the Sensory Beds etc. Many look after plants at home until they are ready to be planted.
- o The hundreds of bulbs planted by the KIB team along the Embankment made a stunning display in Spring.
- o Two individuals are being trained (a year's training in the first instance) to look after the Community Garden bees, and will eventually guide visitors and give talks on beekeeping.



C5 Funding & Support

- o Other than the relatively small donations it receives from Kingsbridge Town Council (£2,500 this year, which included £1000 towards new planters in Duncombe Park), Kingsbridge in Bloom relies on its own fund-raising efforts to support itself.
- o Over the past year it has raised £1,600 through a combination of its 100 Club scheme, and a series of quiz nights, Ceilidh and market stalls.
- o Local businesses are incredibly supportive to Kingsbridge in Bloom, not only through their floral efforts, but also by providing goods and services at a discount or for free. Examples include Cornwall Farmers for supplies of potting compost and Otter Nurseries and Avon Mill Garden Centre for plants.
- o In addition, KIB was a winner in the NatWest CommunityForce competition – gaining funding for improvements to the Recreation Ground through community votes cast.
- o The main resource upon which KIB depends is its small army of volunteers who undertake most of the work involved in keeping Kingsbridge 'in bloom' – particularly now that services from the District Council have been reduced due to economic constraints.

Appendix 1: Community Champions

The success of Kingsbridge in Bloom is not only dependent on the small army of volunteers who regularly turn out for working parties in all weathers, but also on a number of unsung heroes from within the community. These are people who, despite having their own businesses to run, always find the time and resources to support the efforts of the 'In Bloom' team. We highlight the first three Community Champions below:

Terry Harvey

Terry is Manager of the Creeks End pub on the Quayside in Kingsbridge, and has been an enthusiastic supporter of Kingsbridge in Bloom since its inception. The Creeks End is situated next to the Town Square where considerable regeneration work has been undertaken. Terry has provided coffees and breakfast rolls for the volunteers working on the square, and has also delivered refreshments to teams working elsewhere (see photo). The Creeks End has provided an excellent venue for meetings and fund-raising activities, and its flower displays are an inspiration to other businesses.



Theresa Lidstone

Theresa Lidstone works at the hair salon known as Belinda David. She has been a hairdresser for 50 years, and is also a talented plants-woman and a great supporter of Kingsbridge in Bloom. Theresa has displayed an amazing set of planters outside her salon each year for many years, replanting them with pride throughout the seasons. An album of her displays will be available for viewing at the exhibition in St Edmunds. Theresa was encouraged to enter her displays in the Local Gardens Competition and has been a winner on more than one occasion. She took an active part in the Medieval Festival, when the shop was decorated as a Barber Surgeon's.

Bill Patrick

Bill (shown on the right) is the owner of the Regal Club, and has been hugely supportive to the regeneration of the Church St garden - having supported it financially and through watering and maintenance. He made the large planters used in the garden, and has gone on to make further planters for KIB to be used in Fore Street and in Duncombe Park.



Appendix 2 : Our organisation and contacts

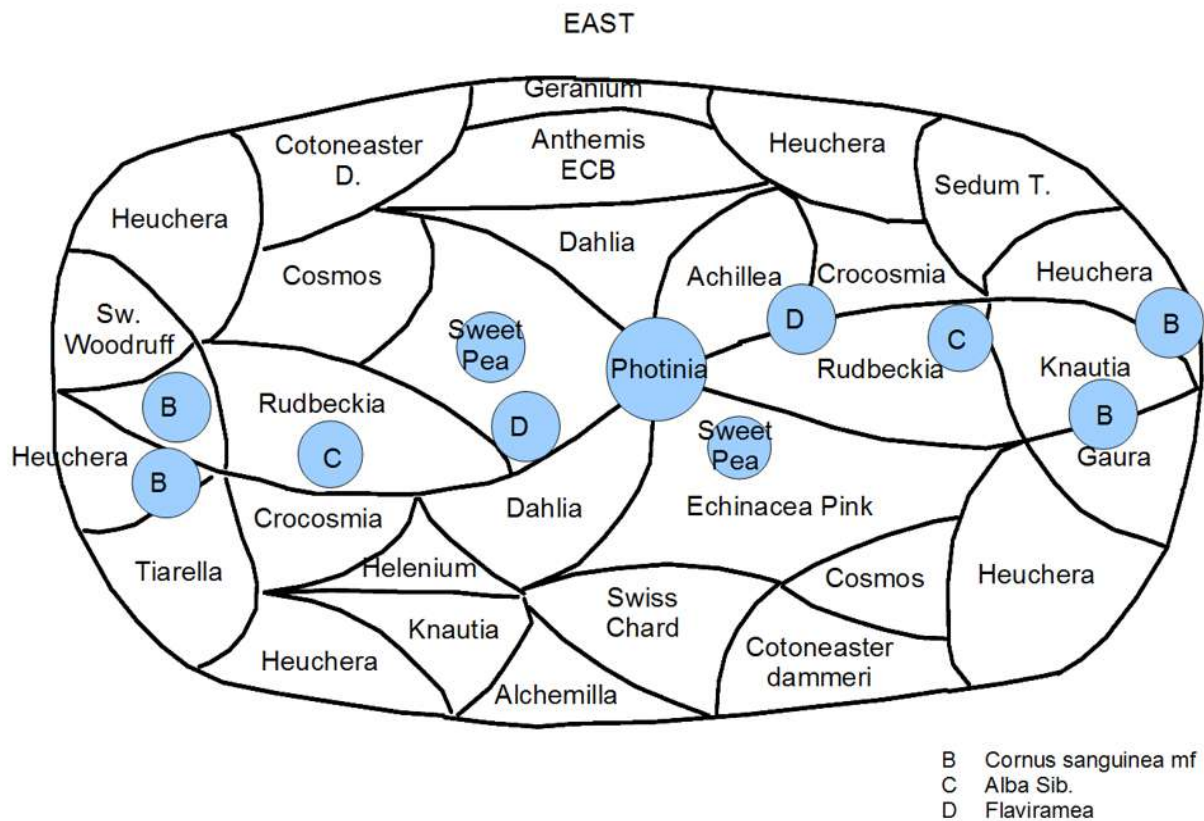
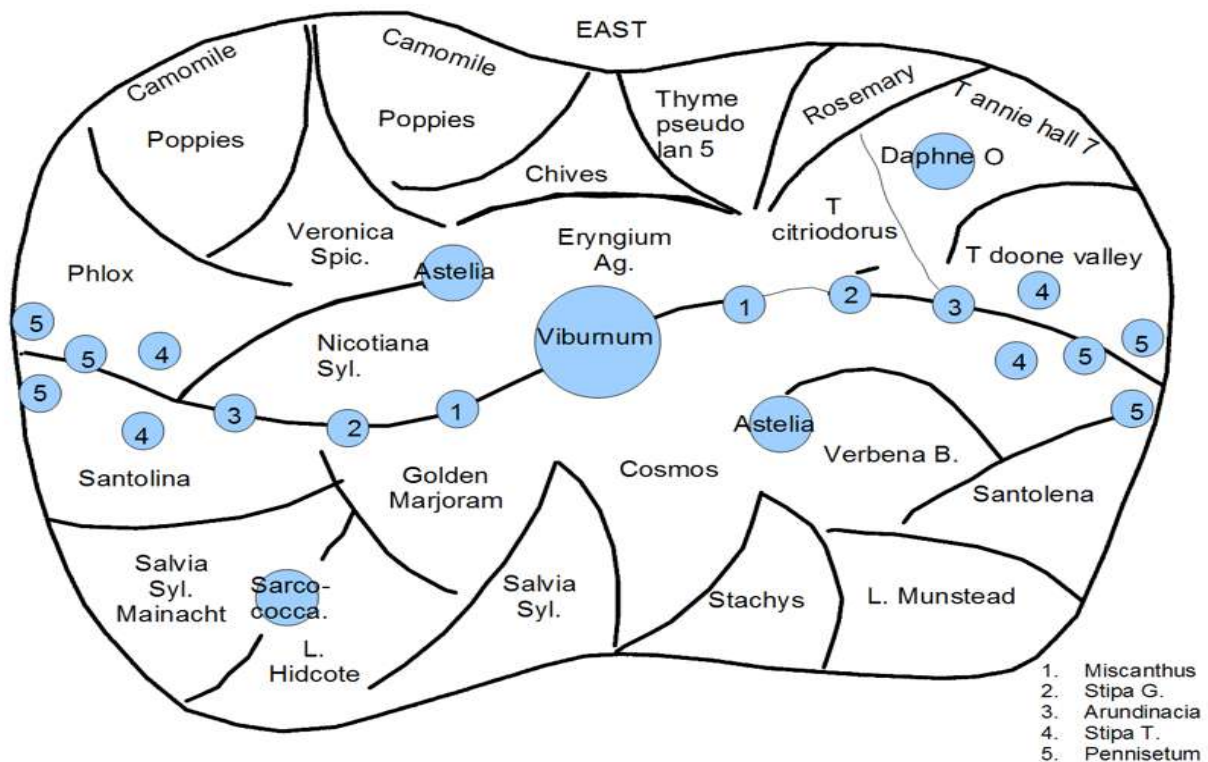
Kingsbridge in Bloom (KIB) consists of a committee, with links to a wide range of other individuals and organisations with whom we work closely.

This year the committee has been made up as follows:

Graham Price	Project Manager, working party organiser, interface with local Councils & SWIB, business participation & sponsorship
Anne Balkwill	Committee Chair, liaison with local Councils, fund raising, working parties
Grenville Taylor	Committee Treasurer, 100 club organiser, liaison with Cookworthy Museum
Chris Barnwell	Committee Minutes Secretary, links to Walkers are Welcome & Ramblers, working parties
David Dain	Committee member, working parties and support to locality schemes, liaison with Kingsbridge Community Garden
Angela Taylor	Committee member, publicity, fund raising, liaison with Kingsbridge Community Garden
Irene Jeeninga	Committee member, business engagement, liaison with Chamber of Commerce and KTC, working parties
Jackie Case	Committee member, gardening & plants expert, working parties, liaison with Kingsbridge WI
Rob Harkness	Committee member, SHDC Open Spaces Manager, liaison with KIB, responsible for Kingsbridge grounds maintenance team
John Speed	Committee member, equipment maintenance & watering, working parties, links with Kingsbridge Community Garden and Agenda 21
Jan Finbow	Committee member, community liaison, working parties, liaison with Gardeners club
Bob Willars	Committee member, portfolio & interpretation board production, liaison with Community College & locality schemes, beekeeping

The committee would also like to acknowledge the support to Kingsbridge in Bloom from the KIB team of volunteers, and the many others who have supported us through the year. These include the Kingsbridge Scouts and Girl Guides, Kingsbridge Primary School and Community College, the Churches in the town and the many individual members of the community who have contributed their time and expertise so freely to support our campaign.

Appendix 3 : Planting Plan for Sensory Beds in Recreation Ground



Appendix 4 : Funding and Sponsorship (2011-12)

Major items of income for Kingsbridge in Bloom 2011/12 have been:

Kingsbridge Town Council
£2,500

100 Club receipts
£400

KIB fund-raising events £1,200

Donations (and help in kind) from the following local businesses,
organisations & individuals £1,000

Avon Mill Garden Centre
Cornwall Farmers
Creeks End Inn
Devon Pond Plants
Greencrop
Harrison Nurseries
Healthwise
Herring Shoes
Howdens
Jeffrey Browning
Kings Arms Hotel

Kingsbridge Chamber of
Commerce
Kingsbridge Community Garden
Kingsbridge Estuary Boat Club
Kingsbridge Gardening Club
Kingsbridge Market Traders
Kingsbridge Cookworthy
Museum
Kingsbridge Information Centre
Malborough Forge
Nick Walker Printing
Otter Nurseries
Potter Nurseries

Quay Quilters
Regal Club
Rendles
Selworthy Vets
South Hams District Council
Street Gate Camelia Nurseries
Studio Flowers
The Post
Tesco
Toad Hall Cottages
Womens Institute

Kingsbridge in Bloom also facilitates the purchase of hanging baskets by business premises on Fore Street and elsewhere, which the businesses pay for themselves.

The regeneration of the Recreation ground was largely funded by Kingsbridge Town Council. However, Kingsbridge in Bloom raised the following towards the improvements:

NatWest CommunityForce competition £6,275

Donations (Kingsbridge Feoffees & Rotary Club of Kingsbridge) £2,500

