

Kingsbridge



In Bloom 2010



CONTENTS

Welcome to Kingsbridge.....	3
Kingsbridge and South West in Bloom.....	3
Section A: Horticultural Achievement.....	4
A1. Impact.....	4
A2. Horticultural Practice.....	5
A3. Residential and Community Gardening.....	6
A4. Business Areas and Premises.....	7
A5. Green Spaces.....	7
Section B: Environmental Responsibility.....	8
B1. Conservation and Biodiversity.....	8
B2. Resource Management.....	10
B3. Local Heritage.....	10
B4. Local Environmental Quality.....	11
B5. Pride of Place.....	12
Section C: Community Participation.....	13
C1. Development and Continuity.....	13
C2. Communication and Education.....	14
C3. Community Involvement.....	14
C4. Year-Round Involvement.....	16
C5. Funding and Support.....	16
Appendices.....	18
1 - Our Organisation and Planning.....	18
2 - List of Sponsors and Supporters.....	19
3 - Features Cross-Reference and Map.....	20
4 - Income and Expenditure.....	22
5 - Town Square Project, Part Funded by SDCLAG.....	23
6 – Walkers Are Welcome.....	25
7 - Guidelines for establishing local community ‘garden crews’.....	26
8 – Press Scrapbook.....	28



(The front page picture is of the Kingsbridge Primary School “Pictorial Meadow” Project .)

The monochrome photographs in this portfolio are included by kind permission of the Kingsbridge Cookworthy Museum. Other photographs have been taken specially for Kingsbridge in Bloom, or for the associated initiatives mentioned.

Introduction and Welcome

Welcome to Kingsbridge

Welcome to Kingsbridge, a town with an enviable position on the South Devon coast in a designated Area of Outstanding Natural Beauty.



View along the Estuary at low tide



Its position at the head of the ria known as Kingsbridge Estuary means that it has served both country and coastal activities since its foundation. These two aspects of the town give us our theme for this year.

Kingsbridge and South West in Bloom

This year is our third entry in South West in Bloom. Our first efforts were built on existing strengths within the town – strong community activities, which could be polished and melded into a competitive entry.



In 2010, we have been more ambitious, even though the general economic climate is more difficult. With part-funding from the South Devon Coastal Local Action Group (LAG), we have planned a new centre-piece in the Town Square. At the same time, projects that began last year continue to develop. The Railway Bridge project,

celebrating the lost “Primrose Line”, the Britton’s Field wild flower meadow and picnic spot overlooking the estuary and the Lime Kiln are enhanced. Another new venture is to encourage residents to take on new projects within their own area. The foot of Church Street is the site of the old Dodbrooke Market, now a small green space and play area which had been much neglected for many years. Church Street residents and businesses have joined together to enhance this space.



Artists Impression of the Town Square Project



Students and teachers – working on our video, and on wooden planters

We have also been developing our relationship with the local secondary school, Kingsbridge Community College, and so feature them this year, while retaining our close connections to the Primary School through art and other projects.

Section A: Horticultural Achievement

A1. Impact

This year we are planning the theme of our developments around the idea that the town links countryside and coast. The theme is reflected in using boats and farm carts as planters, and also in the Lime Kiln display, and development of the old



market place on Church Street. Our ambitious new project assisted by the LAG will introduce sustainable beds, supported by rainwater harvesting, and is planned to reference the Estuary with heron and little egret sculptures.



The Lime Kiln



The Old Dodbrooke Market Place

A2. Horticultural Practice



Preparing baskets (Taken on a mobile phone)

well as of energy in requiring less frequent watering). The plans for our LAG-supported Town Square project incorporate water capture from the roof of the Kingsbridge Information



SHDC Planting on the Embankment

This year, through the co-operation of Potters, a local nursery, we have planted our own water retaining baskets. Potters remain our supplier for baskets for commercial premises. Our new baskets include water reservoirs, and will be more economical of water use (saving in excess of 4000 litres for our 2010 campaign) and of plants (as



Citizenship Students at the Community Garden

Centre, and from natural drainage feeding into a subsurface storage tank. It is planned to recirculate the water using a solar-powered pump.

We have co-ordinated planting and maintenance plans with South Hams District and Devon County Councils.

The Community Garden remains a local exemplar of good sustainable practice.

A3. Residential and Community Gardening



The Quay area, or Town Square includes a number of community features, including:

- Beds in the car park planted by our own community KIB volunteers, and the local Gardening Club.
- Quay House (the Town Council offices) where the garden is cared for by a councillor and his wife and the Age Concern garden, maintained by volunteers
- Tumbly Hill Day Centre

Elsewhere in the town, we have



New seating at Church Street Old Market Place



- The Church Street Old Dodbrooke Market Place project, led by residents
- Windsor Court development of retirement homes
- Our Eastern Backway project



Display outside "Belinda David" through the seasons

A4. Business Areas and Premises



Outside Wills Marine



Four-tub planter, built by Chapman's Forge

Fore Street is the primary retail area, with traditional shops, but also passages such as the entrance to the Old Bakery. Harbour House has attractive courtyard gardens front and back. Further out, we include the Selworthy Veterinary Practice.

Many of the local and national businesses give sponsorship as well as maintaining their own displays.

A5. Green Spaces

A Tree Trail has been introduced in close co-operation with KIB to support the “Walkers are Welcome” initiative (see Appendix 6). Trees around the Embankment and Town Square have been labelled, and Kingsbridge Information Centre holds information and children's competition sheets.



Britton's Field in 1890...



...and during restoration

The KIB Britton's Field project continues to develop. Originally prepared as a wild flower meadow with the advice of the South Hams Natural History Society, it now has additional amenities as part of the town “Walkers are Welcome” initiative. Our participation in this national campaign is being led through the Kingsbridge Information Centre, who also promoted a “Green Family Picnic”. See Appendix 6 for details.



*Kingsbridge Green Family Picnic
on Britton's Field*



The Recreation Ground in 1924



Part of the renovated Play Area

The Recreation Ground has had long-standing problems of salt-water ingress. The site was originally part of the estuary, cut off by the Embankment, and lies below high tide level. The sluices have finally been restored, and re-working of the garden area is under way after many years. The sports and play areas have been completely renewed to a very high standard and will form part of the carefully planned regeneration strategy for the whole area.

Section B: Environmental Responsibility

B1. Conservation and Biodiversity

Where appropriate, we preserve and celebrate local plants such as valerian, campanula and erigeron (wall daisies). The Information Centre keeps a “spotters list” of quayside plants produced for Kingsbridge in Bloom 2008.



Log Pile Wildlife Habitat at the Community Garden



The neighbouring Play Group views new pond at the Community Garden

The Community Garden remains a prime example of conservation in practice and encourages biodiversity in its overall approach. A student

recently built a log pile as a habitat for small animals in the wild area, and the pond has just been renovated by an impressed sponsor.

The Cookworthy Museum, on Fore Street has among its exhibitions

- “Start Bay – A Fragile Landscape” - developed in conjunction with the AONB. This exhibit shows the issues surrounding the SSSI, and its vulnerability to coastal erosion.
- “Come Rain or Shine” - developed in combination with the Meteorological Office, to show local climate and weather, and its effect on people's activities.



The New Kingsbridge Cookworthy Museum Exhibit on climate in the South Hams

The Primary School remains keen to participate. Its “Never-Ending Nature” project continues to develop. Additionally, they now have a “Pictorial Meadow” near the School entrance. Below, we show a sequence of pictures of the development of this flower bed.



Development of the Primary School Pictorial Meadow (also see cover picture)

B2. Resource Management

We have developed an Environmental Policy, which covers matters such as economy and re-use of water and other materials. We re-use compost from our displays.

Our co-operation with South Hams District Council includes an agreed division of labour, so that things that can be done by volunteers are. This allows the SHDC labour force and its facilities and machinery to be deployed in the most effective way. For example, our volunteers have taken on planting and maintenance of a number of the SHDC and DCC beds.



Moving 18 tons of Viridor Compost

Our new Town Square Project, part-funded by the SDCLAG, includes water management and harvesting features. See Appendix 5 for a fuller view of the plans. We have also introduced water-retaining baskets for some of our displays (these are saving both water and labour).

The Community Garden continues its role as demonstrator of good practice in conservation, recycling and sustainability, with its water harvesting, extensive composting, and composting toilet.

The South Hams achieves over 57% recycling through its collection services (claimed to be fourth-best in the country). This year we have taken advantage of the free Viridor sustainable soil conditioner to provide for the bulk of our needs for planting.



Our bowzers are still kept busy



Our new baskets reduce our water needs and give a good show

B3. Local Heritage

Key displays related to our local heritage are:

- The Railway Bridge project celebrates the heyday of the Primrose Line, which was regarded as one of the most attractive stretches of railway line in the country. As before, primroses abound in Spring.
- The Lime Kiln. Limestone was brought by boat, and burnt to provide lime to treat the farm land, so many lime kilns are found around the estuary.
- The boat and farm cart planters represent the history of the town as a link between farming and the sea.





A Boat Club planter on the Embankment



and a traditional cart in the Museum Farm Gallery



Planters at the Lime Kiln

This year, we are including on our judging route the Kingsbridge Cookworthy Museum. This has a small garden attached to its display of traditional farming equipment from the area. We also take advantage of the Museum archive for photographs showing the history of some of our features.

B4. Local Environmental Quality

We have identified and promoted the maintenance of a number of areas around the town, in addition to our own regular working parties for improving communal areas.

- We have promoted the formation of a Church Street-based group to improve and maintain the old Dodbrooke Market area (See Appendix 7)
- We continue to promote the maintenance of the Eastern Backway (which we renovated in 2008)
- We have invoked the “Big Tidy” campaign, to help with cleanliness of streets and public spaces
- The Community Garden runs an Open Gardens weekend every other year



- Our local garden competition now in its third year is intended to encourage attractive displays outside the town centre and to build local pride

We have been involved with our local schools in promoting environmental quality and worked alongside the local Community College students and staff in cleaning and tidying public open spaces.



The Old Dodbrooke Market on Church Street is transformed (after 100 years!)



Two gardens from the Open Gardens Weekend

B5. Pride of Place

Part of our Town Square “LAG Project” is to introduce silhouette sculptures which invoke the estuary.

The “Walkers are Welcome” tree trail includes tree labelling and information sheets with a children's trail.

In areas such as the Old Dodbrooke Market Place and Duncombe Street corner, our supporters (the Church Street Community group and the Lions Club, respectively) have maintained and repainted benches and other features.



*The Power of Summer – by Gill Cox
Art in the Landscape*



Cub Scouts renovating a bench which is now at the Railway Bridge



Duncombe Street Corner



Working on the Old Dodbrooke Market Place

Section C: Community

Participation

C1. Development and Continuity



Making a planter at the Community College

We believe that the approach at the Old Dodbrooke Market Place is a model for further projects. The formation of motivated groups with a vested interest in improving the quality of their own area should be sustainable.

The Town Square Project is a different type of venture, but is specifically designed to require little maintenance, and to be self-sustaining in water.

We continue to maintain good relations with other organisations in the town: The Chamber of Commerce, Kingsbridge Town Council, South Hams District Council, Devon County Council, as

well as charitable and special interest clubs, societies and other groups in the area.

Businesses have given excellent support, both through their own displays, by sponsoring town centre displays, or by generous donations. See our list of sponsors in Appendix 2.

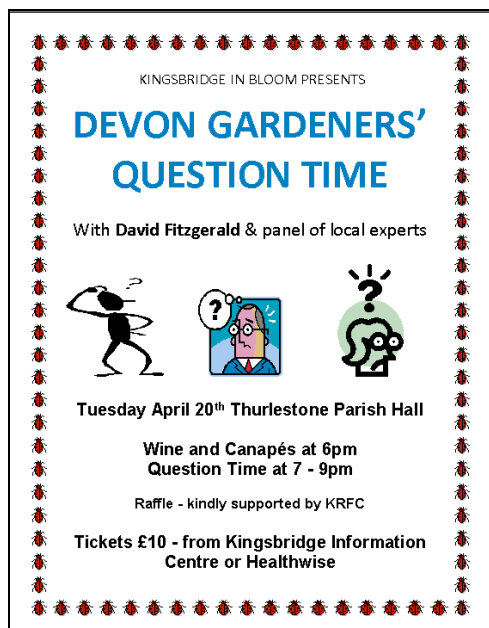
C2. Communication and Education

We have continued to maintain contacts with the Kingsbridge Primary School. The primary school has its own “Never-Ending Nature” project, and through an art competition have provided us with our new logo. This year, however, we are featuring the developing relationship with the Kingsbridge Community College. The Community College is helping with three projects: it is building some mosaic pots and wooden planters for use in our displays; it is also helping our publicity by producing a video, and has, together with its IT teacher and his commercial company, offered to improve our web site.

We regularly have material published in the local press, notably the Kingsbridge Gazette, plus two local free magazines, “By the Estuary” and “The Post” and a church magazine.



Kingsbridge In Bloom
"Growing pride in our town"



We are also actively promoted through the Kingsbridge Information Centre, whose support is invaluable. We have been on air with the local talking newspaper and with BBC Radio Devon.

One of their presenters, David Fitzgerald (*right*), chaired the panel for one of our publicity/fund-raising events “Devon Gardeners Question Time” with a panel of local gardening experts.



We also use several local websites for publicity. To keep people informed, and to encourage wider involvement, we held a public showing of our plans for the Town Square Project (our SDCLAG - supported Project)

C3. Community Involvement

We run a series of regular working parties to complete specific tasks around the town in line with our high level project plan (See Appendix 1) – these are publicised through the Information Centre and other local channels (e-mail etc), and attract a growing number of supporters.



Above & left – working on car park beds

We offer suitable tasks to a group of adults with special needs. This year, they have taken on the maintenance of a small garden we lease from Lloyd's Bank.

Our entries to the new “It’s my Neighbourhood” competition include Tumbly Hill Day Centre and Kingsbridge Community Garden.



We continue to work with and through other community groups wherever we can – so the Chamber of Commerce is our channel for Fore street commercial premises, and the Lions, Rotary, Feoffees and other charitable groups lend their support. See Appendix 2.



An entry in this year's local competition



Plans on show at the Bandstand

The local competition, now in its third year, includes several new categories. The proprietor of the Creeks End Inn, on the Quay, has donated a cup for “Best overall Entry”, which we hope will help raise the profile of this aspect of our campaign.



The Methodist Church display



C4. Year-Round Involvement

We have maintained our year-round programme of events, with fund-raising and publicity, and working parties for maintenance and planting. We have our Logo Competition for primary schools, and representatives have given talks to a number of local groups.

We participate in local group events such as Kingsbridge celebrates Christmas and support other events with refreshments. This year our own events included a concert by the local choir “The Kingsmen”, and a “Devon Gardeners Question



Winter on Leigham Terrace



Selling holly on Fore Street

than our earlier single projects.

C5. Funding and Support

Our funding comes from various sources:

- Lump sums from sponsors.
- Individual donations.
- Promotional events (e.g. “Devon Gardeners Question Time”)
- Matched-funding from SDCLAG.
- Sale of promotional materials (see next page for the design donated by a local artist)
- The 100 Club, with its monthly draw

KINGSBRIDGE IN BLOOM

presents

A charity concert with
The
KINGSMEN

February 27th 2010 at 7pm



**At St Edmunds Church
Kingsbridge**



Time.” Several local businesses and groups show support by changing their displays on a regular basis.

Planning for our major Town Square Project began early, and required careful consideration, as the financial commitment was much bigger

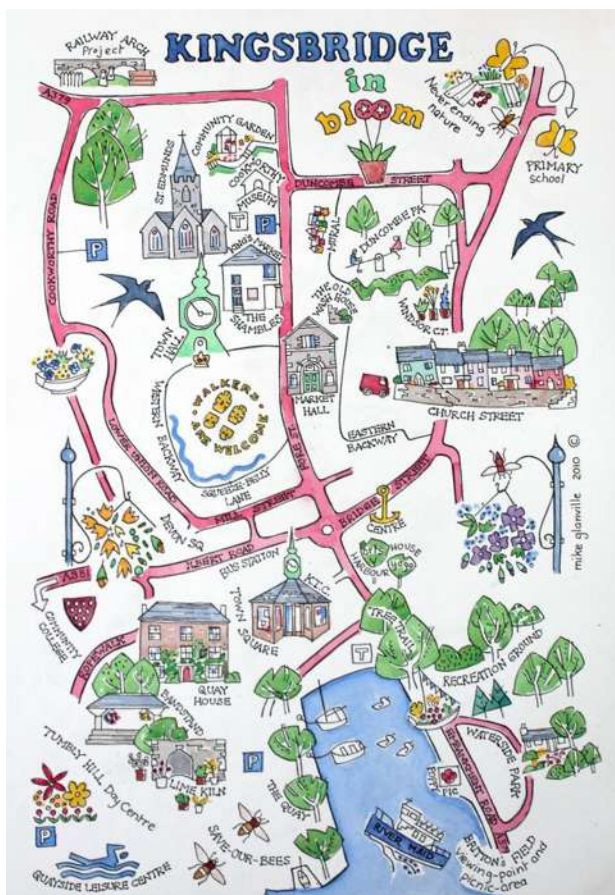


*Stall For Kingsbridge Celebrates
Christmas*

Our support comes in a number of ways:

- South Hams District Council co-ordinate their green spaces work with us
- Direct Working Parties attract individual volunteers
- Volunteers and volunteer groups undertake contributory projects (e.g. the Lime Kiln, Duncombe Street Corner, the Old Dodbrooke Market)
- Businesses, groups and individuals maintain their own displays and offer them as a contribution (e.g. Fore Street shops, Community Garden, private gardens)

The Kingsbridge In Bloom map was originally produced for our Flower Festival last year. The artist has brought it up-to-date, and it now features on tea-towels and postcards to publicise Kingsbridge in Bloom throughout the year.



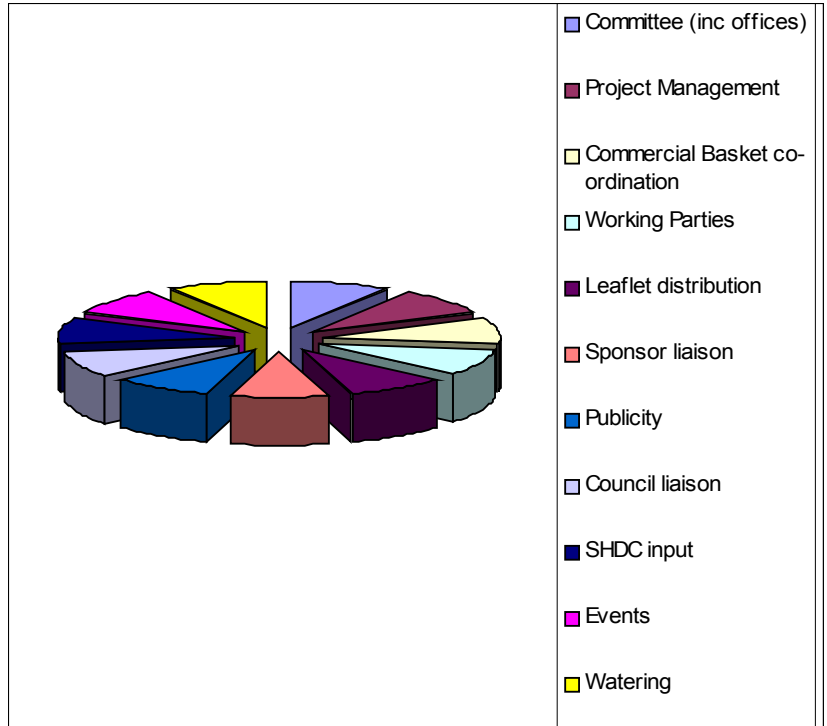
Appendices

1 - Our Organisation and Planning

Our organisation consists of a committee with a rather informal membership. We have a small number of designated areas of responsibility, but others are welcome to attend and participate. In particular, we invite the South Hams District Council Green Spaces Manager to attend, plus representatives from Kingsbridge Town Council. Contacts with Devon County Council are handled through one-to-one meetings or conversations.

We have the usual formal roles of Chairman, Treasurer and Secretary. In addition we have a Project Manager with particular responsibility for planning and co-ordinating our campaign. Members of the committee take responsibility for other specialised areas, including:

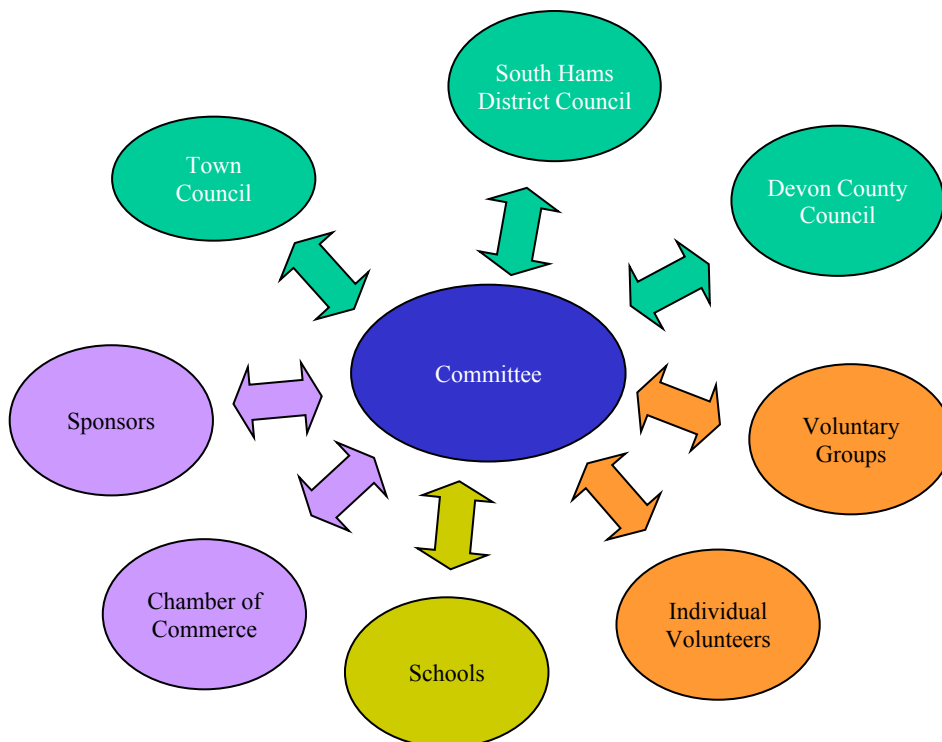
- Fund-raising
- Publicity (events, press, etc.)
- Events
- Planting and Horticulture
- Local Competition organisation
- Mentoring Neighbourhood Award entries



The pie chart represents a not-to-scale breakdown of our activities.

A large part of our activity is co-ordinating and liaising with others, so that the activities of other groups of hard-working enthusiasts in Kingsbridge form part of our entry to South West in Bloom.

The chart on the right represents our liaisons



2 - List of Sponsors and Supporters

We would like to thank all of the following, who have helped our campaign:

Beers Solicitors, and Kingsbridge Town Council, who made substantial unconditional grants to our funds.

The estate of David Moore, through the Ramblers Association, who funded planting for our Town Square project.

The South Devon Coastal Local Action Group, who provided matched funding for our major project.

The following have given generously of their money and/or services:

Andrews Funeral Directors	Kingsbridge Lions
Arrow Cars	Kingsbridge Market Traders
Art Cafe	Kingsbridge Rotary
Ash Tree Farm and Nursery	Kingsbridge Rugby Football Club
Avon Mill Garden Centre	Roy Hann and the Kingsmen, and Panache
Bags of Choice	Mr & Mrs P. Long
Bartons Solicitors	Malborough Forge
By the Estuary	Mayne Gallery
The Card Shop	The Meeting Room
Chapman's Forge	John Montague plants
Charles Head and Son Estate Agents	Jenny Niemeyer
Chocamour	Noyce's Garden Centre
Cornwall Farmers	Otter Nurseries
Country Market	Paul's Plants
Creeks End Inn	Pauline Fryer
Devon Pond Plants	The Post
Dodbrooke Feoffees	Potters Nurseries
First Choice Travel	Provence
David Fitzgerald, BBC Radio Devon	Quay Auto Centre
Mike Glanville (illustrator/artist)	Reel Cinema
Greencrop	Terry Reeves (local judge)
Haden Building Services	Rendles
Harbour Bookshop	Stevie Rogers
Healthwise	Selworthy Vets
Herring shoes	South Hams District Council
The Hire Shop Kingsbridge	South Hams Newspapers
Hosking Machinery	Strete Gate Camellias
Howdens Joinery	Studio 92/Martin Norsworthy
Jasmine	Studio Flowers
Kimberley Nurseries	Mr & Mrs M. Tan
Kingsbridge Advertiser	Toad Hall Cottages
Kingsbridge Camera Club	Viridor
Kingsbridge Chamber of Commerce	Nick Walker Printing
Kingsbridge Estuary Boat Club	Whetman Pinks
Kingsbridge Estuary Rotary	Women's Institute
Kingsbridge Feoffees	Wills Marine
Kingsbridge Information Centre	Windeatts' Solicitors

We would like to record our grateful thanks to all our faithful volunteers and to many others who have given freely of their money, time and expertise.

3 - Features Cross-Reference and Map

		A: Horticultural Achievement	A1. Impact	A2. Horticultural Practice	A3. Residential and Community Gardening	A4. Business Areas and Premises	A5. Green Spaces	B: Environmental Responsibility	B1. Conservation and Biodiversity	B2. Resource Management	B3. Local Heritage	B4. Local Environmental Quality	B5. Pride of Place	C: Community Participation	C1. Development and Continuity	C2. Communication and Education	C3. Community Involvement	C4. Year-Round Involvement	C5. Funding and Support
1	Quay House																		
2	Town Square																		
3	Tumbly Hill Day Centre																		
4	Lime Kiln																		
5	Kingsbridge Community College																		
6	Fore Street																		
7	Museum																		
8	Community Garden																		
9	Railway Bridge Project																		
10	Duncombe Street																		
11	Church Street																		
12	Windsor Court																		
13	Embankment																		
14	Waterside Park																		
15	Selworthy Court (Vets)																		
16	Brittons Field																		

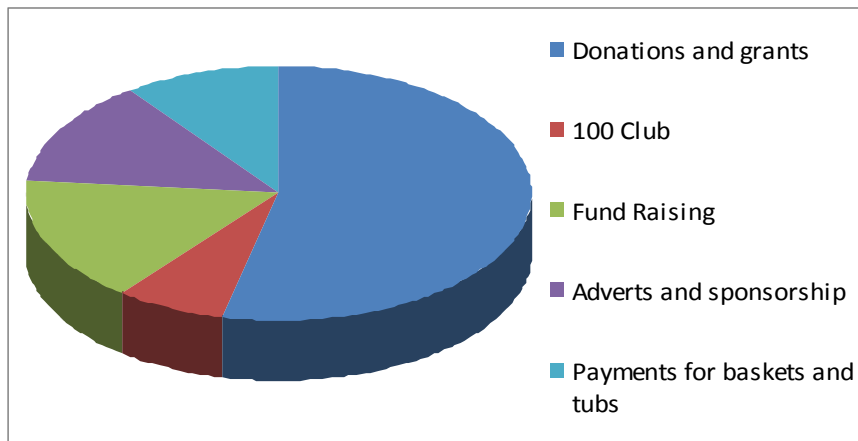


Judging Route 2010

4 - Income and Expenditure

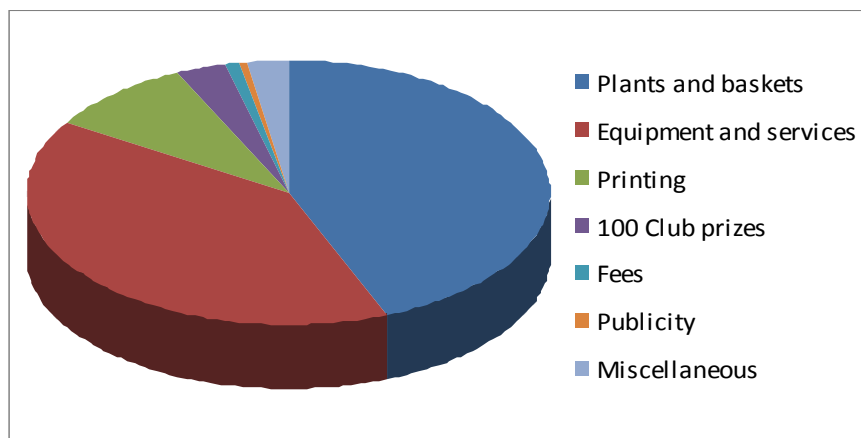
Income 08/09:

Donations and grants	£5815
100 Club	£754
Fund Raising	£1760
Adverts and sponsorship	£1439
Payments for baskets and tubs	£1086
Total =	£10,854.00



Expenditure 08/09:

Plants and baskets	£3973
Equipment and services	£3606
Printing	£837
100 Club prizes	£280
Fees	£60
Publicity	£65
Miscellaneous	£221
Total =	£9042

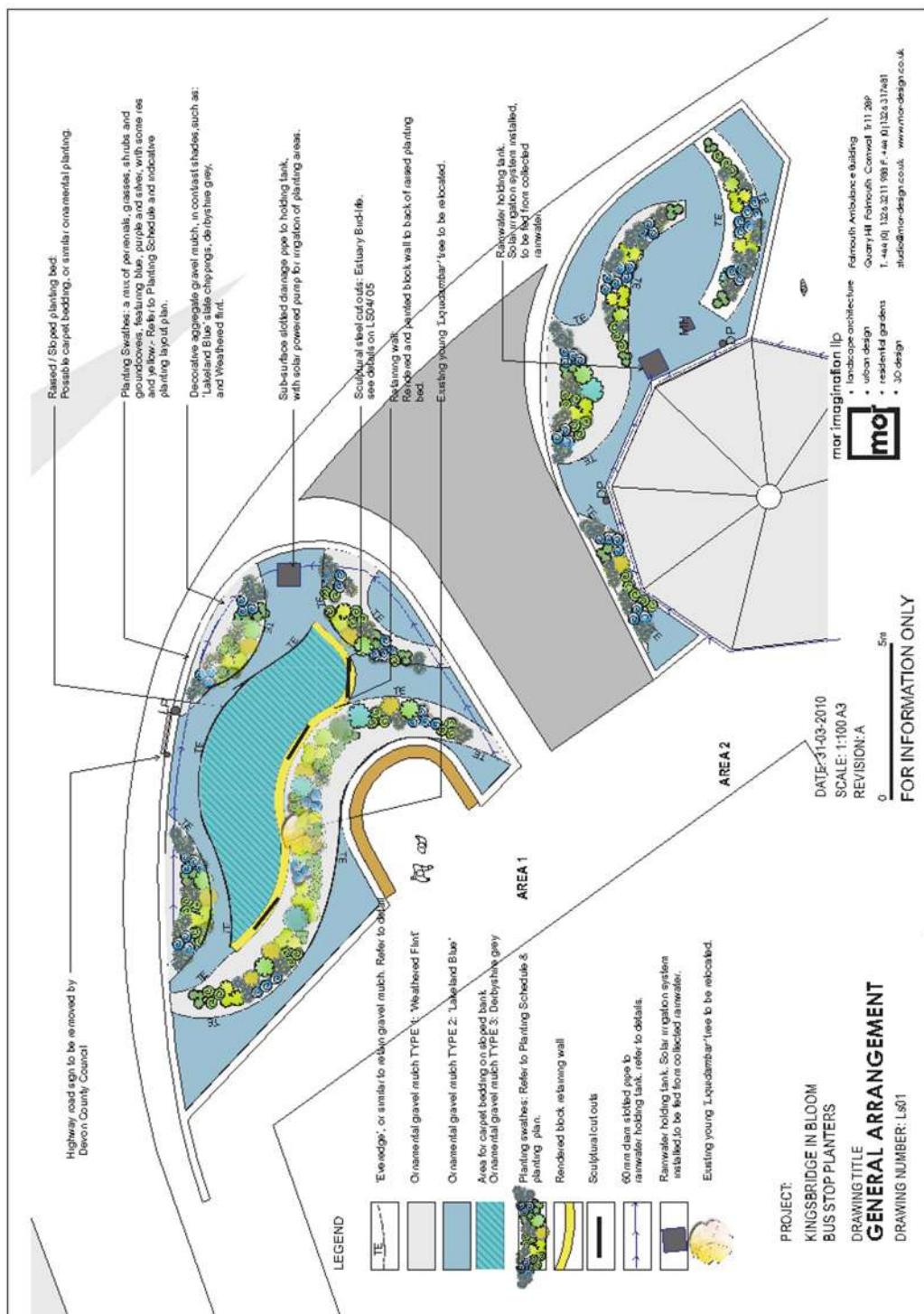


5 - Town Square Project, Part Funded by SDCLAG

The project was envisaged to form a centre-piece for the Kingsbridge entry to South West in Bloom. It is supported by matched funding from the South Devon Coastal Local Action Group (incorporating funding from the EU, Defra, SWRDA and LEADER).



The European Agricultural Fund for Rural Development: Europe investing in rural areas



Perennials:

AS	Aconitum 'Sparks Variety'	Monkshood	2L	10
AFC	Achillea filipendula 'Cloth Of Gold'	Yellow Yarrow	2L	14
AL	Artemisia ludoviciana	Wormwood	2L	8
AFM	Aster x frikartii 'Munich'	Michaelmas Daisy	2L	6
CCC	Cynara cardunculus 'Cardy	Cardoon	2L	5
ETT	Echinacea 'Tiki Torch'	Coneflower gold	2L	6
EPM	Echinacea purpurea 'Magnus'	Coneflower purple	2L	10
ERV	Echinops ritro 'Veitch's Blue'	Globe Thistle	2L	15
EK	Erigeron karwinskianus	Mexican Felabane	2L	4
EZ	Eryngium x zabelii 'Jos ejfking'	Sea Holly	2L	12
KLM	Kriphofia 'Little Maid'	Red Hot Poker	2L	1
PLS	Perovskia 'Little Spire'	Russian sage	2L	9
ROB	Rudbeckia occidentalis 'Black Beauty	Black Eyed Susan	2L	20
SP	Salvia 'Purple Rain'	Sage	2L	6
VB	Verbena bonariensis	Verbena	2L	12

Groundcovers:

SH	<i>Sedum 'Herbststeuende'</i>	Stonecrop syn Autumn Joy'	2L	25
SN	<i>Sedum Novem</i>	Stonecrop	2L	20

Grasses:

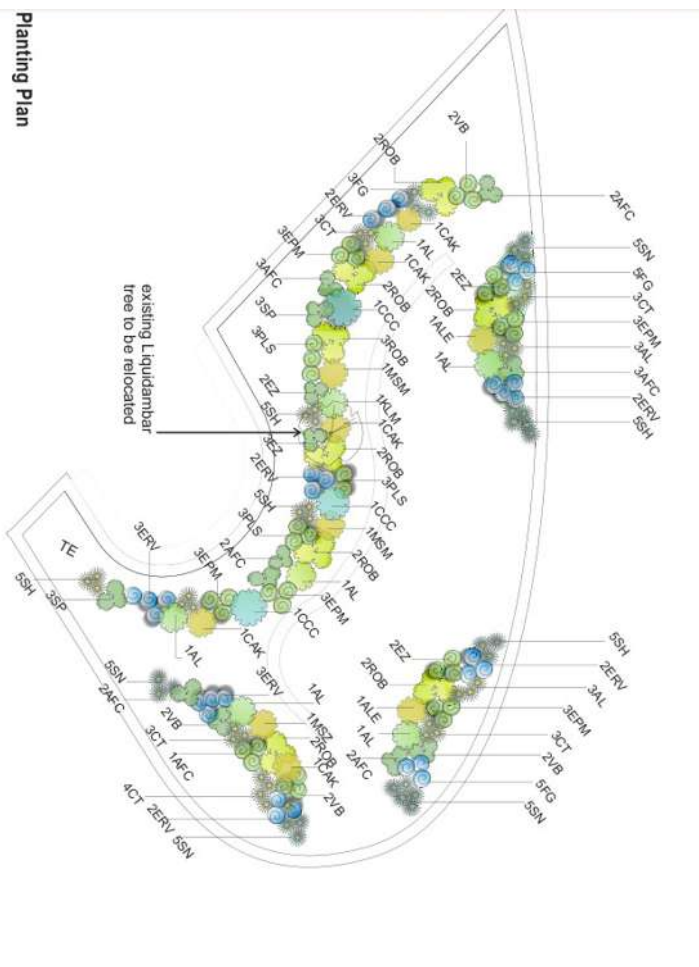
ALE	<i>Anemarrhene lessoniiana</i>	Peasants Tail Grass	2L	5
CAK	<i>Calamagrostis x acutifolia</i> 'Karl Foerster'	Feather Reed Grass	3L	5
CCB	<i>Carex 'Comans Bronze'</i>	Bronze sedge	2L	15
CT	<i>Carex testaceae</i>	Sedge	2L	9
FG	<i>Festuca glauca</i>	Blue fescue	2L	15
LM	<i>Liriope Muscari</i>	Blue Lily-Turf	2L	1
MSM	<i>Miscanthus sinensis</i> 'Morning Light	Chinese silver Grass	3L	2
MSZ	<i>Miscanthus sinensis</i> 'Zabritus'	Zebra grass	3L	1
ST	<i>Stipa Tenissima</i>	Stipa	2L	8

Shrubs

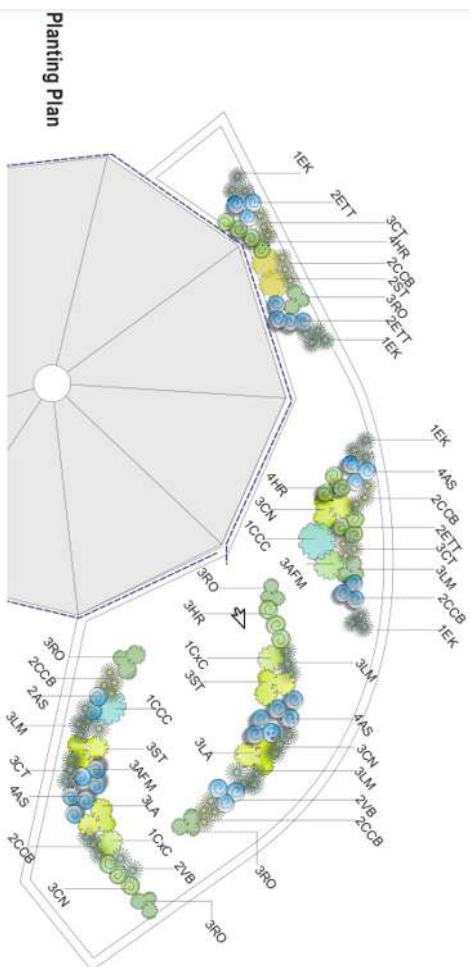
CN	<i>Convulvulus creorum</i>	White Convulvulus	3L	9
HR	<i>Hebe 'Red Edge'</i>	Shrubby Veronica	3L	47
LA	<i>Lavandula angustifolia 'Hidcote'</i>	Lavander	3L	6
RO	<i>Rosemarinus officinalis 'prostratus'</i>	Rosemary-weeping	3L	15
CXC	<i>Caryopteris x clandonensis</i>	'Heavenly Blue'	3L	2

bulbs:

AG	<i>Allium giganteum</i>	Ornamental onion	bulbs	100
----	-------------------------	------------------	-------	-----



Planting Plan



Planting Plan

6 – Walkers Are Welcome

WALKERS ARE WELCOME, is a national campaign to highlight and feature those towns or areas where – as the name implies - walkers are made especially welcome. There is a system of accreditation, requiring support of six criteria, including:

- Demonstration of popular support
- Support of local council
- Maintaining the network of local footpaths
- Encouraging the use of public transport to support walking



Following the Tree Trail

- Organised picnic walks and other events (picnics use the Britton's Field traditional town picnic site, restored through Kingsbridge in Bloom)
- Geocaching ("letterboxes" found using precise grid references, aided by GPS navigation)

The adoption of "Walkers are Welcome" by Kingsbridge is another example of how public and community initiative groups within the town work together to make the town and its surrounding area a friendlier and more attractive place to live in or visit.



A Walk on the Foreshore

For details see

<http://www.walkersarewelcome.org.uk/criteria.html>

Before Kingsbridge, there was no town on the South West Coast Path with WAW status.

The Kingsbridge Information Centre is leading this initiative, and handing the information aspects. The aspects available or under development include

- Leaflets for children's Tree Trail (the trail spells out "Kingsbridge is a 'Walkers are Welcome' Town" with the initials of the tree names)



Tree labelling for the Tree Trail



7 - Guidelines for establishing local community 'garden crews'

Concept: The long-term sustainability of Kingsbridge in Bloom will depend on the extent to which the central efforts of the KIB Committee and its working parties become supplemented by local community 'Garden Crews', each taking responsibility for the floral impact and tidiness of their own part of Kingsbridge.

Example: A Church Street 'Garden Crew' was formed during 2010 with the initial objective of restoring a small public garden and play area (the site of the old Dodbrooke cattle market) at the



bottom end of Church Street. The garden had been left overgrown for many years, and then partially cleared by SHDC, but not replanted. A children's play area, based on a set of farm animals, was not attractive to children or their parents – and some plants were found to be dangerous to health & safety.



As well as designing, planting and maintaining the Old Market garden, the group has set itself a longer-term aim of encouraging their fellow residents to make Church Street 'the best street in town' – by clearing & weeding paths and through the use of pots, planters and window boxes to bring colour to a street which has very limited front garden space.

Guidelines: The success of this first local community 'Garden Crew' has been largely due to the following factors:

1. Having a suitable public space in need of improvement, on which to focus attention in the first instance
2. Creating a core group of people from the locality who have an interest in gardening
3. Bringing the group together in a social setting to generate interest in the project and demonstrate that they will have ownership (and with it, responsibilities)
4. Having someone who will initially facilitate setting up the group, and help with garden design, transport to buy plants etc, as required



5. Gaining the involvement of a patron or sponsor – a key individual, group or local business with a vested interest in the eventual appearance of the public space, who is prepared to fund the project (for plants, planters etc)



6. Having people prepared to take responsibility for watering the garden on a regular basis
7. Encouraging the group to continue to widen involvement in the project within their local community



8 – Press Scrapbook

A sample of our local press coverage.

Monday 17th April
Kingsbridge Park Bowling Club. The Recreation Ground, Entertainment Road opens for the season at 12.00pm - visitors welcome.

Tuesday 20th April
Dorset Gardeners' Garden Show, with David Gifford of BBC Radio Devon, and a panel of local experts at the Devonian Park Hotel between 10 and 12 noon. Tickets £10 includes wine and canapés from Kingsbridge Information Centre for Angela Taylor on 01548 854407 in aid of Kingsbridge in Bloom.

Wednesday 24th April
Come and have a go at bowls at Kingsbridge Park Bowling Club. The Recreation Ground, Entertainment Road from 10.00am to 12 noon and 2.00pm to 4.00 pm. Please wear flat shoes, a shirt and all other equipment will be available.

Thursday 1st and Sunday 2nd May
Kingsbridge Community Centre, 112, Fore Street, Kingsbridge. Saturday from 10am until 4pm, Sunday from 10am until 2 pm. For sale vegetable plants and herbs, bedding plants, geraniums, cypripeds, roses and lots of other home grown plants and lots of other plants. Also for sale: BBQ, garden furniture, lawnmower, etc. Tel: 01548 854407. Email: kingsbridgegardeners.co.uk

What's on
EVENTS
St Edmund's Church, Kingsbridge
Saturday Feb 27th at 7 pm
CONCERT WITH THE KINGSBRIDGE PANACHE AND THE GUARDET MAGNUM
in aid of Kingsbridge in Bloom.
with Wine and Raffle
Tickets £10 - £5.50 in advance
available from Kingsbridge Information Centre and via Kingsbridge in Bloom - phone 01548 854407

Whats On
CELEBRATE Kingsbridge in Bloom 2009, at Quay House on Friday October 9th 5.30 - Cream tea 6.00 - Presentation of Awards 6.30 - Plans for 2010 7.00 AGM
RSVP to Marie Price on 01548 854488 by Fri October 2nd

The Open Gardens Weekend

Do you need a reminder for your diary? 'Open Gardens Weekend' run by the Community Garden, takes place on 5th and 6th June, from 1.30 pm.

Maps/tickets are on sale now at the Tourist Information Centre; the proceeds will be split between the Garden and St Luke's Hospice.

And now to bring you up to date on Kingsbridge in Bloom, which achieved a Silver Gilt Award in South West in Bloom, in both 2008 and 2009.

Last year in addition to baskets and containers round town, the team started work on some new projects - The Plymouth Road Railway Bridge, Britton's Field and the Lime Kiln on the quay.

This year we will be continuing to work on improving our Flower Power, with new baskets up Fore Street and in the Town Square and more planters on the roundabout close to Boots.

Thanks to a grant from the Local Coast Action Group, we will also start work on a special feature close to the Information Centre.

Watch this space!

Your Greenfingering expert Angela Taylor

KINGSBRIDGE IN BLOOM
The Bloom goes on...

It is now 3 years since it was decided to give Kingsbridge its own South West In Bloom competition, and we were quickly rewarded by two Silver Gilt Awards! In Bloom is now very much part of the town plan - and work goes on all the year round.

Over the winter the team has been applying for grants and laying plans for more features and more flowers, with a strong emphasis on sustainability - water saving, reusing, and recycling, all essential aspects of a good In Bloom campaign. So, look out for water-saving basins, more displays and plants carefully chosen to need less water. As the year goes on, check out the new beds planned for the embankment, the Railway Bridge project on

Plymouth Road, the Lime Kiln on the quay to the Leisure Centre, the planned beds and the picnic area at Britton's Field, which over time will make into a full flower meadow, with wonderful scenery views.

In cooperation with Villages on Wheels, we also have the Sea Trail around the heart of the town.

Of course, none of this would be possible without the generosity of the Town Council and many local businesses, plus lots of local people who have made donations in appreciation of the improvements. As one person wrote "What a world of difference the flower displays made to Fore Street and the side streets. A delight to go

WITH spring just around the corner, the Kingsbridge in Bloom team are once again asking for community help in making what will, hopefully, be the best floral displays to date.

Over the winter the In Bloom team has been hard at work, laying plans for more features and flowers and attempting to go eco-friendlier by saving water, re-using and recycling all essential aspects of a good In Bloom campaign. The young people are already on board, with various ecological projects, including recycled mosaic pots and eco-gardening. Both Kingsbridge Primary School and Kingsbridge Community College are getting stuck into composting and now it's the community's chance to get involved.

In Bloom has three main strands - the horticultural (floral displays), the environmental (conservation, recycling) and the community-based (getting everyone involved). Last year, the judges were very impressed with the community effort and features such as the flower-filled boats, the Lime Kiln and the resurrected Railway Line.

They also noted that the town was impressively tidy, but could still go the extra mile in terms of environmental targets such as recycling in its many forms.

So the team is encouraging the community to not just keep their gardens beautiful, but to go eco-friendlier by recycling and reusing whatever they can. Work parties will be starting around Easter with some planting parties before then, so if you could give an hour or so a week, why not join in and look after a local corner?

For more information, contact 01548 854407.

Please mention **By The Estuary** when responding to adverts. To advertise here, please call 01803 835740 or email mark@bythediart.co.uk

***Time to get the garden bug!**

WITH spring just around the corner, the Kingsbridge in Bloom team are once again asking for community help in making what will, hopefully, be the best floral displays to date.

Over the winter the In Bloom team has been hard at work, laying plans for more features and flowers and attempting to go eco-friendlier by saving water, re-using and recycling all essential aspects of a good In Bloom campaign. The young people are already on board, with various ecological projects, including recycled mosaic pots and eco-gardening. Both Kingsbridge Primary School and Kingsbridge Community College are getting stuck into composting and now it's the community's chance to get involved.

In Bloom has three main strands - the horticultural (floral displays), the environmental (conservation, recycling) and the community-based (getting everyone involved). Last year, the judges were very impressed with the community effort and features such as the flower-filled boats, the Lime Kiln and the resurrected Railway Line.

They also noted that the town was impressively tidy, but could still go the extra mile in terms of environmental targets such as recycling in its many forms.

So the team is encouraging the community to not just keep their gardens beautiful, but to go eco-friendlier by recycling and reusing whatever they can. Work parties will be starting around Easter with some planting parties before then, so if you could give an hour or so a week, why not join in and look after a local corner?

For more information, contact 01548 854407.

Garden brings out the best

ANGELA TAYLOR and the team at the Community Garden, Kingsbridge, write:
The Trustees and Volunteers of the Kingsbridge Community garden would like to say thank you to the three teachers and seven students from Kingsbridge Community College for their invaluable assistance in the garden on the Monday prior to the RHS inspection for South West in Bloom. Their dedication and attention to detail was an inspiration to us all. Once again the youngsters have shown us that they are ready, willing and able to help in the community.

Thanks for bloom aid

From page one wished to thank everyone who had helped with this year's campaign, especially all the sponsors who made the displays possible. South Hams Council's Green Spaces team and the volunteers who have worked throughout the year to keep things planted, watered, weeded and tidied.

Help at the last moment from a group of students from Kingsbridge Community College was also invaluable.

There was also a high level of interest in the local competition, with 17 entries to the different classes, of which Kingsbridge received awards for Best Garden, Best Small Garden (won by Rose Rogers of Church Street), Best Container (won by Ali Watkins of Encone, Fore Street) and Best Large premises (won by Tumbly Hill Day Centre).

Mr Freeman of Lion Close scooped his Best Garden prize for a second year and Tumbly Hill Day Centre received a certificate of merit for their flourishing displays during the judging period.

A celebration and award ceremony for the individual awards will take place on October 9 at Quay House.

Sponsors, contributors and volunteers are invited as well as the award winners and anybody who wishes to take part in next year's campaign.

Kingsbridge in Bloom are now beginning to plan for 2010 and would welcome any suggestions for next year.

Kingsbridge in Bloom adds new award to its impressive tally

The silver harvest

Dental Care delighted to welcome to the team Sandra Dring, locally as Sandra.

happy to take it please call 01548 854407

KINGSBRIDGE In Bloom took Silver Gilt for a second year at the Royal Horticultural Society's South West In Bloom award ceremony.

The event, which took place at Westland Centre in Yeovil, was attended by project manager Graham Price and Kingsbridge deputy mayor Cllr Anne Baskwill.

The regional awards were categorised according to the population of areas.

Kingsbridge in Bloom's new features included the Primrose Line project at the Old Railway Bridge, the Lime Kiln on the Quay and the poppy mural on the Memorial Shelter.

Graham Price said: 'We were delighted to have received the prestigious Silver Gilt certificate for

by KRISTIAN BRUNT-SEYMOUR

Kingsbridge again. It is only the second time we have entered the competition.

The Britain In Bloom competition is fiercely contested by other towns, villages and cities so to achieve such a good result is really satisfying and is a true reflection of the community spirit and support that we have received.

'We are all volunteers and have been delighted to have received many very positive comments from both residents and visitors including many from abroad.'

Kingsbridge in Bloom organisers
Turn to page three

Friday, July 24, 2009 (KBG)

Yet another fine show

KINGSBRIDGE In Bloom judging got underway last Wednesday with the town aiming to improve the Silver Gilt Award in 2008.

Judge Martin Ford arrived at Quay House at around 10am and was introduced to the various people who and contributed to Kingsbridge in Bloom. Kingsbridge Town Mayor Phil Yates and Project Manager Graham Price each gave a warm welcome to Mr Ford from the Royal Horticultural Society, and thanked him for coming to the event, adding that they hoped that he would enjoy the displays.

Graham Price gave thanks to all the people

who worked so hard behind the scenes, the town clerk Martin Johnson and Town Mayor.

Mr Ford then began his inspection of the town, casting his expert eye on the various displays and proceeding on a judging route around the town, accompanied by various dignitaries. The group proceeded up Fore Street to St Edmunds Church, taking photos of the displays and meeting and greeting residents as they went where all but a few businesses had flowers on display, including hanging baskets, potted and window plants.

Town crier Roger Fidler made a cry on

Mill Street welcoming residents to Kingsbridge Town adding 'As you will walk about town I am sure you will be impressed with our members, who have put a lot of hard work on our displays.'

The judges made note of the passion and pride shown. The group continued en route to the Railway Arch, along to Kingsbridge Primary School and the community garden and then down to Britton's Field and the Quayside before returning to Quay House for a light lunch and board presentation.

Jackie Case, one of the organisers said: 'The level of community involvement has been

www.southhams-today.co.uk



A splash of colour for Kingsbridge in Bloom competition

fantastic and the people feel that they are getting involved in the project.'

The board presentations will be kept on display in Quay House until Friday, July 24.

Graham Price said: 'We were very fortunate that the gale force winds and bad weather

the night before judging had cleared. I was so pleased that the sun came out for the judging and that the hard work and dedication by the team, added by the many sponsors and the Town and District Councils, showed Kingsbridge at its very



From left, Mike Hasler, of Beers; mayor Philip Yates; and project manager Graham Price

Cash boost for floral hopes

TO celebrate its 125th year anniversary, law firm Beers is giving a donation of £2,000 to the 2010 Kingsbridge in Bloom campaign.

Beers chief executive Maria Harding said: 'We were looking for a number of opportunities this year to give something back to

Kingsbridge and Kingsbridge in Bloom project manager, was delighted.

He said: 'It will not only help us improve our displays, but further develop our strategy for moving towards sustainable planting throughout the town.'

This cash will be used to improve displays for the town's 2010 entry in the RHS floral competition.

Money to help the town bloom

KINGSBRIDGE and Salcombe Chamber of Commerce has donated £1,000 to next year's Kingsbridge in Bloom preparations in recognition of the group's success over the summer in winning the Silver Gilt Award.

It brings the total donated to the KIB committee by the chamber of trade to £2,600 in the last two years.

The money will go towards the cost of buying new water-

saving hanging baskets, which will be fitted to the display posts at each of the crossing points in Fore Street.

The intention is that the baskets will now be an all-year feature in the town.

Peter Richardson, the chamber's treasurer, said: 'We are pleased to make this investment in the infrastructure and these robustly-made posts should last for many years.'



Chamber treasurer Peter Richardson presents the cheque to KIB's Graham Price

* Devon is third best recycling county

FIGURES released by DEFRA show that Devon is the third best recycler in the country.

Last year an impressive 51.6 per cent of the county's household waste was recycled - 14 per cent more than the average county in England.

Devon was only just behind Leicestershire, which recycled 52 per cent of its household waste.

'Devon has always supported waste reduction, re-use and recycling initiatives and I'm delighted that the county as a whole has been so successful by encouraging and making it easier for householders to recycle their waste,' said Cllr Roger Croad, Devon spokesman for Environmental and Regulatory Services.

All the Devon districts have improved their recycling figures, with South Hams and Teignbridge householders recycling more than 57 per cent of their waste. This performance put South Hams in fourth place of all English waste collection authorities for recycling.

The figures also showed that East Devon is collecting the lowest amount of waste per person in Devon, placing them in the top ten English Authorities for reducing waste per head of population - with the South Hams not far behind.

For more information about reducing, re-using and recycling waste in Devon visit www.recycledevon.org.uk or call 0845 450 2477.



The ladies' choir Panache in full voice

KINGSBRIDGE in Bloom's fund-raising campaign of 2010 will start musically with a Concert, featuring the ever popular ladies

choir Panache and the accomplished quartet, Magnum.

The Concert will take place at St Edmund's Church, Fore Street, Kingsbridge on Saturday February 27 at 7pm with wine and a raffle, for which local award-winning photographer Martyn Norsworthy has donated the Star prize of a portrait sit-

The KIB committee wished to thank The Kingsmen's Musical Director Roy Hann and his team for giving their services to help make Kingsbridge's attractive flowery displays and features all round town bloom even brighter this coming summer. The hope is to repeat or better the success KIB had in 2008

scooped Silver Gilt in RHS South West in Bloom.

Tickets will be going on sale soon via the Information Centre, from choir members and from Kingsbridge in Bloom phone Angela Taylor on 01548 854407.

Sally Brown
ALL

Celebrating a well-kept success

A CELEBRATION of Kingsbridge in Bloom was held at Quay House to mark the success in the South West in Bloom awards at which the town scooped a Silver-Gilt Award for the second year running.

The evening started in true Devon style with a cream tea, followed by a short address from project manager Graham Price and Kingsbridge mayor, Cllr Phil Yates.

Both thanked the sponsors and those 'who have helped keep the standards high', as well as stressing the importance of building on the success in creating an attractive and well-kept town.

Awards were pre-

sented by the mayor to Mr Bob Freeman of Lion Close for 'best garden', Rose Rogers of Church Street for 'best small garden', Ali Watkins of Encore, Fore Street, for 'best container/baskets' and to Tumbly Hill Day Centre for 'best large premises'.

With more categories proposed for next year, the event is set to involve more people and seems likely to grow steadily each year.

Next year's plans involve continuing work on projects at the Plymouth Road railway bridge and Britton's Field, as well as increasing the numbers of baskets to bring added colour to the town, and a special feature that is to be developed close to the Town Square.

After a brief interlude, the guests were shown a short slide presentation, mapping the progress of Kingsbridge in Bloom since 2007 and highlighting the sterling efforts of volunteers and supporters and the South Hams Green Spaces Team.

The evening concluded with the annual meeting, in which the following committee position's were re-elected: chairman, Cllr Anne Balkwill; project manager, Graham Price; treasurer, Liz Willars; secretary, Grenville Taylor and publicity, Angela Taylor.

The team are now looking for new ways to involve townspeople in making Kingsbridge ever more attractive and in finding new ways to raise funds. Any offers of help or ideas will be gratefully received. Phone 01548 854407 or email kib@gandat.co.uk

The Kingsbridge in Bloom 100 Club offers prizes every month. To register, collect a form from the Information Centre, look online at www.kingsbridgeinbloom.co.uk or phone Bob Willars on 01548 857603. Membership costs £24 per year.



The winning gardeners with Mayor Cllr Philip Yates

KINGSBRIDGE IN

and

WALKERS ARE WELCOME

INVITE YOU TO JOIN THE COUNTRY'S FIRST FAMILY GREEN PICNIC



WHERE: BRITTON'S FIELD - KINGSBRIDGE'S VERY OWN TRADITIONAL FAMILY PICNIC FIELD WITH STUNNING VIEWS DOWN THE ESTUARY (follow the signs along the Embankment - 10 minutes walk from the Town Centre!)

WHEN: BANK HOLIDAY MONDAY 31ST MAY 2010 - FROM 12.00 to 2.30PM

WHY: TO KICK START NATIONAL FAMILY WEEK, FAMILIES RIGHT ACROSS THE COUNTRY ARE GETTING INVOLVED ON BANK HOLIDAY MONDAY 31ST MAY, WITH EVENTS CONTINUING THROUGHOUT JUNE.

FOR YOUR GREEN PICNIC, PLEASE THINK ABOUT SOURCING FOOD AND DRINKS LOCALLY, MAKING SURE WASTE AND PACKAGING IS RECYCLED WHERE POSSIBLE, AND TRYING WHEREVER POSSIBLE TO GET TO AND FROM THE PICNIC SUSTAINABLY.

ALL YOU HAVE TO DO IS BRING YOUR FOOD AND DRINK - AND COME ALONG! YOU WILL FIND GAZEBOS, PICNIC CUTLERY, DRINK CUPS, ETC. THERE WHICH YOU ARE VERY WELCOME TO USE ON THE DAY.

AFTER YOU'VE HAD YOUR GREEN PICNIC, ALL WE WOULD ASK PLEASE IS THAT YOU LEAVE YOUR AREA CLEAN AND TIDY.

COME AND FIND OUT ABOUT SOME OF THE EXCITING PLANS KINGSBRIDGE IN BLOOM AND KINGSBRIDGE WALKERS ARE WELCOME HAVE FOR BRITTON'S FIELD!

Blooming plans are starting to blossom

THE Kingsbridge in Bloom team have been busy readying the town for this year's competition and changes are beginning to show.

New planters can be seen outside Boots,

thanks to the generosity of Chapman's Forge, and there are more barrels on the roundabout courtesy of Heads and Rendles. The car park beds are being re-furbished, and work is

going on both at Plymouth Road bridge and at Britton's Field.

The team are keen to encourage everyone in the town to lend a hand by joining one of the weekly working parties.

More volunteers have come forward, but there is still more to do to impress the judges in July.

It's also the time to sign up to join the local Kingsbridge in Bloom competition.

Forms can be obtained from the Information Centre, or via the website - www.kingsbridgeinbloom.co.uk. If anyone can spare an hour or so to help in any way, please contact Graham Price on 01548 854488 or via kib@gandat.co.uk.

LOOKING FOR A LOCAL SERVICE? SEE 'SHOP LOCAL'

www.southhams-today.co.uk

or LCT, I do not know which for sure - but the crew had omitted to replace the engine cover after servicing, therefore it failed to swim ashore.

The crew were saved by inflating their life raft. April 28, 0200hrs: A convoy of eight LSTs, as part of this exercise, were 'wallowing' in Lyme Bay at about four to five knots half a mile apart and one mile behind a First World War, lightly armed, escort vessel when nine E-boats, torpedo boats capable of 44 knots, slipped into the bay.

They torpedoed three ships, two went down and a third limped home to Dartmouth. One vessel sank so quickly that the upturned hull is a war grave.

The positions and even one dive report are available.

Many lessons were learned during this event, most important being the need for one communication wavelength for all forces involved in an exercise.

One of the E-boats is now in our local area awaiting further restoration.

Why is it that such graphic events are depicted so clearly in Azromanches, where the mulberry harbour can still be seen, but we have little or no funding available to depict history of such importance to this nation? I would love to see a permanent display of the whole story set up for visitors to view.

Floral campaign is in full swing

ANGELA TAYLOR, of Kingsbridge in Bloom Committee, writes:

With the Kingsbridge in Bloom campaign in full swing,

it seems a good time to acknowledge the help that makes things go so well. You will all have seen local people hard at work on the flowerbeds and the grass borders around town but, over the last few weeks, primroses have been quietly bedded in, containers planted and hedges and borders trimmed by people too numerous to mention.

Now the watering has begun, people are out with the bowser caring for the new hanging baskets up Fore Street and around the Town Square.

A party of residents have recently begun to transform the former Market Square at the bottom of Church Street, making a delightful seating area.

Businesses have also been doing their part behind the scenes, with donations in cash and kind: new sponsors this year include Rendles and Howdens, and we have had valuable support from Martyn Norsworthy of Studio 92, and Hoskings and Chapman's Forge who created the stunning barrel planter outside Boots.

As I write, David Kerr from Devon Pond Plants is rebuilding the pond at the community garden with the help of more volunteers.

Young people have also been involved - the Cubs have been helping restore an old bench for the railway bridge and college students have been involved in a variety of projects, including making a video of the team at work.

Over 25 gardens have been open to the public - all in aid of St Luke's Hospice and the community garden. Glorious weather made this a magical occasion, but it would not have been possible without the gen-

erosity of all the garden owners.

So, thank you one and all, and whatever the judges' verdict this July, we can surely be truly proud of our town.

And now a reminder - there is still time to join in the local garden competition, which will be judged in mid-July, with the special attraction of a new cup, kindly donated by Terry at the Creek End.

Entry is free but please collect forms from the information centre or download from www.kingsbridgeinbloom.co.uk.

We will review donation policy

DAVID COHEN, chairman

Salcombe Festival 2010, writes: One of our outlets has told me that a customer in their shop refused to pay for a festival programme because we ask for a donation of £2, as opposed to offering it for sale at a price.

The background to our policy is proven, in that so many people kindly donate more to the cause, but I thank the person concerned for pointing out a technical flaw which we shall review.

Quay boot sales ruling puzzling

ERIC MURRAY, of Byron Road, Whiteway, Dursley, writes:

Like correspondent Michael Tann, I enjoyed the weekly Sunday morning boot sales on Kingsbridge Quay during the summer months.

I live in Gloucestershire but spend many weeks in the South Hams between April and October. I always purchase a



Walkers gather for a walk to celebrate Kingsbridge acquiring Walkers Are Welcome accreditation

Walkers are welcome here!

KINGSBRIDGE Information Centre held the first of what they are hoping will be regular events to celebrate the town's status as the first in Devon to secure the prestigious Walkers Are Welcome national accreditation, with a presentation ceremony last Friday and their own award ceremony on Saturday - and they were delighted with the success of the launch!

We were absolutely delighted with the response to our very special launch

events. Over 150 people attended the presentation evening on Friday to hear the launch ceremony and enjoy the wonderful buffet showcasing local food and drink - and both our one-off walks on Saturday were really well supported with an excellent mix of local residents and holidaymakers of all ages and abilities, said Amanda Bloomer, the information centre's manager.

Thanks to the many people who supported us in all our hard work to achieve

this award and all those who helped to make the events so enjoyable, we have now put Kingsbridge firmly at the centre of the walking map!

The launch weekend was intended to introduce the significance and scope of the Walkers Are Welcome accreditation and highlight just some of the huge variety of projects which will be delivered under that programme by local project champions.

It is still not too late, however, for people to get involved - in many different ways. To find out more about what you can do get in touch with the Information Centre team in Kingsbridge.

Amelia added: 'This is just the start now - the accreditation is for life. We plan to be delivering projects well into the future with long-term benefits for everyone.'

Do look out for future opportunities to enjoy what Walkers Are Welcome has to offer for you.'



Children and animals are welcome to come along, too!



The walkers explore the Kingsbridge Estuary

Professor to speak at AONB celebration